

Experience the **evolution** of a classic Tenney test chamber

C-EVO

Since 1932 Tenney has pioneered the design and manufacturing of environmental testing equipment.

Designed for Value, Reliability and Performance, **C-EVO** is a world class environmental cycling test chamber loaded with standard features and advanced technological upgrades:

- Largest temperature and humidity range in the industry
- Smallest equipment footprint in the industry
- Superior Heat Capacity (KW), Cooling Capacity (HP/BTU) and Air Flow Capacity (CFM) deliver the best temperature change rates and uniformity in the industry
- Redundant user and equipment safety features are standard

Benefits:

- Robust design delivers consistent, reliable, repeatable results that lead to higher productivity
- Improved serviceability and reduced maintenance cost
- Programmable controller - VersaTouch™ - is very intuitive - easy to set up and user-friendly
- Constructed for long life and thermal integrity

 **200° C**

 **-73° C**

 **All new energy saving design**

 **Workspace sizes: 10, 20, 30 cubic feet**

 **Global support network**

**[One year
parts and labor
warranty]**

SPX
THERMAL PRODUCT SOLUTIONS



Standard Features

- VersaTouch™ controller
- Ethernet port
- USB port
- Heated viewing glass window
- Chamber light
- Two 3" cable ports
- Solid state humidity sensor
- Platinum RTD temperature sensor
- Heavy duty leveling casters
- Nichrome wire air heater
- Solid state pressure switches
- Thermal expansion valves
- FM approved safety OTP
- Backup safety thermal cutoff
- Main electrical disconnect LOTO
- Chamber vent port
- One shelf standard
- UL 508A compliant

Model	C10S	C10C	C10RS	C10RC	C20S	C20C	C20RS	C20RC	C30S	C30C	C30RS	C30RC
Cubic Feet	10				20				30			
Liters	283				566				850			
Work Space (W x D x H)	24" x 26" x 28" / 61cm x 66cm x 71cm				30" x 32" x 36" / 76cm x 81cm x 91cm				36" x 40" x 36" / 91cm x 102cm x 91cm			
Exterior (nominal) (W x D x H)	32" x 58" x 68" / 81cm x 147cm x 173cm				38" x 64" x 76" / 97cm x 163cm x 193cm				44" x 72" x 76" / 111cm x 183cm x 193cm			
Unit Weight (LBS)	1000	1154	1000	1154	1100	1254	1100	1254	1250	1350	1250	1350
Temperature Range	-35°C	-73°C	-35°C	-73°C	-35°C	-73°C	-35°C	-73°C	-35°C	-73°C	-35°C	-73°C
	200°C	200°C	200°C	200°C	200°C	200°C	200°C	200°C	200°C	200°C	200°C	200°C
Humidity Range *	-	-	10% - 95%RH	10% - 95%RH	-	-	10% - 95%RH	10% - 95%RH	-	-	10% - 95%RH	10% - 95%RH
Cooling Rate (empty chamber) Min (C/Min)												
180C to -65C		72 (3.4)		72 (3.4)		111 (2.2)		111 (2.2)		136 (1.8)		136 (1.8)
125C to -40C		37 (4.5)		37 (4.5)		53 (3.1)		53 (3.1)		63 (2.6)		63 (2.6)
85C to -20C	22 (4.8)		22 (4.8)		33 (3.2)		33 (3.2)		40 (2.6)		40 (2.6)	
85C to -40C		30 (4.1)		30 (4.1)		45 (2.8)		45 (2.8)		54 (2.3)		54 (2.3)
ambient to -40C		15 (4.3)		15 (4.3)		23 (2.8)		23 (2.8)		28 (2.3)		28 (2.3)
ambient to -68C		40 (2.3)		40 (2.3)		66 (1.4)		66 (1.4)		85 (1.1)		85 (1.1)
Heating Rate (empty chamber) Min (C/Min)												
-65C to 180C		42 (5.9)		42 (5.9)		64 (3.8)		64 (3.8)		84 (2.9)		84 (2.9)
-40C to 125C		28 (6)		28 (6)		42 (3.9)		42 (3.9)		50 (3.3)		50 (3.3)
-20C to 85C	18 (6)		18 (6)		26 (4)		26 (4)		32 (3.3)		32 (3.3)	
-40C to 85C		21 (6)		21 (6)		31 (4)		31 (4)		38 (3.3)		38 (3.3)
-34C to ambient	10 (6.2)	10 (6.2)	10 (6.2)	10 (6.2)	14 (4.2)	14 (4.2)	14 (4.2)	14 (4.2)	17 (3.5)	17 (3.5)	17 (3.5)	17 (3.5)
-68C to ambient		15 (6.2)		15 (6.2)		22 (4.2)		22 (4.2)		27 (3.5)		27 (3.5)
Live Load Watts @ -18C	1200	1700	1200	1700	1160	1650	1160	1650	1120	1610	1120	1610
Live Load Watts @ -40C	-	1400	-	1400	-	1330	-	1330	-	1260	-	1260
Live Load Watts @ -54C	-	1100	-	1100	-	1010	-	1010	-	940	-	940
Temperature Control	±0.3°C after stabilization				±0.3°C after stabilization				±0.3°C after stabilization			
Temperature Uniformity	±2°C @ 65°C				±2°C @ 65°C				±2°C @ 65°C			
Humidity Control	-	-	±2% RH	±2% RH	-	-	±2% RH	±2% RH	-	-	±2% RH	±2% RH
Air Flow Rate	500 CFM				500 CFM				500 CFM			
Heat Capacity	3KW				3KW				3KW			
Humidifier Capacity	-	-	2KW	2KW	-	-	2KW	2KW	-	-	2KW	2KW
Refrigeration	2 HP	(2) 2 HP	2 HP	(2) 2 HP	2 HP	(2) 2 HP	2 HP	(2) 2 HP	2 HP	(2) 2 HP	2 HP	(2) 2 HP
Condenser	Air Cooled - Std Water Cooled - Option				Air Cooled - Std Water Cooled - Option				Air Cooled - Std Water Cooled - Option			
Power	208V - 230V 1P 60Hz				208V - 230V 1P 60Hz				208V - 230V 1P 60Hz			
Amp - Fuse	40	60	50	60	40	60	50	60	40	60	50	60
Amp - Under Load	32	45	40	45	32	45	40	45	32	45	40	45
Power	460V 1P 60Hz				460V 1P 60Hz				460V 1P 60Hz			
Amp - Fuse	20	30	30	30	20	30	30	30	20	30	30	30
Amp - Under Load	16	23	20	23	16	23	20	23	16	23	20	23

Performance estimates based on 230v 1P 60Hz

*Humidity Range: based on temperature range 20°C to 85°C limited by 3°C dewpoint

All technical data specified for units with standard equipment. All figures are typical average values for C-EVO Series devices. SPX Thermal Product Solutions reserves the right to alter technical specifications at any time. Data may vary depending on ambient conditions, product load, or other changes causing interference to chamber airflow.

Specifications and Product Information is subject to change without notice. Images for reference only. Some options and accessories may not be included with all configured models.

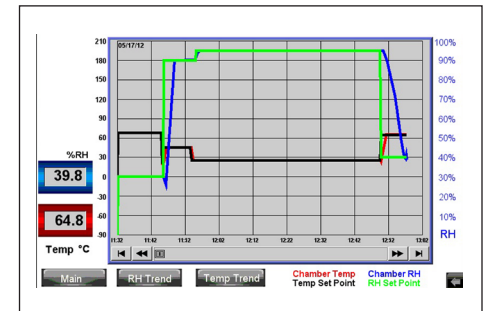
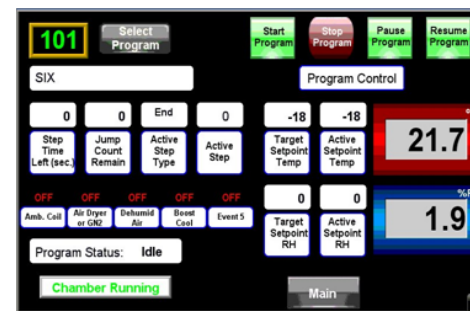
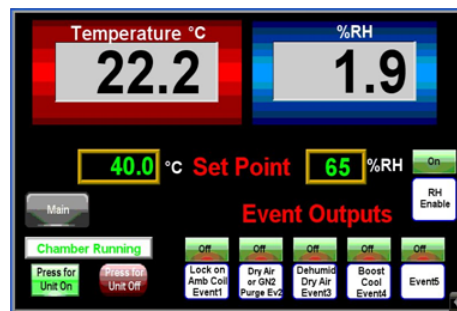




VERSATOUCH™ Control System

- Stunning High Resolution 7" Color Touch Screen
- Intuitive User Friendly Navigation With Built-In Help System

- Built-In USB Port for Data Logging
- Capable of Performing up to 400 Steps
- Real-Time Color Graph Displays
- Remote Networking
- Built-In Ethernet with 3 Serial Ports
- Data Logging Stored as CSV File
- Intuitive Alarm & Program Management
- Stores up to 20 Test Profiles
- 1 Extra Event Output
- Intuitive Password Protected Security



Cabinet Options:

- Additional shelves
- 6" sub ports

Instrumentation Options:

- Honeywell 1 pen recorder
- Honeywell 2 pen recorder
- Truline 1 pen recorder
- Truline 2 pen recorder
- Specview software

Operational Options:

- LN2 cooling boost
- CO2 cooling boost
- Boost Heat
- GN2 system
- Dry Air system
- Dehumidity dry air system
- Pump to drain
- Water reservoir systems
- Dionizer
- Maintenance kits
- Charcoal absorber water filter

Need an option not listed?
Contact Your Sales Rep.

** The addition of options and/or accessories may impact performance.*

QUALITY

SPX Thermal Product Solutions is a pioneer in the design and manufacturing of environmental test equipment. The Tenney Brand has been an industry leader since 1932. Our decades of experience, processes and procedures ensure quality and reliability of every piece of equipment we manufacture. Rest assured that you are purchasing a world-class piece of equipment built to perform and last.

SERVICE

We back our equipment with a comprehensive service organization. Factory trained, courteous and knowledgeable technicians provide on-site installation, maintenance and repair. In-house service technicians and a parts & service department stand ready to assist you. Contact our service department to inquire on preventive maintenance programs, extended warranties, calibrations services and more.



Tenney, Gruenberg, Blue M
 P.O. Box 150 | White Deer, PA 17887-0150 | USA
 Phone: (570) 538-7200 | Fax: (570) 538-7380
 Physical Address: 2821 Old Route 15 | New Columbia, PA 17856-9396
 TPSinfo@tps.spx.com



LN2 Boost Cooling



Honeywell Recorder



GN2 System



Dry Air System

